



City of Port Angeles  
Clallam County Fire District #2

*Agency Overviews*  
*PAFD & CCFD #2*



Presented By:  
Dan McKeen, Fire Chief  
Mike Oakes, Deputy Chief

May 22, 2008

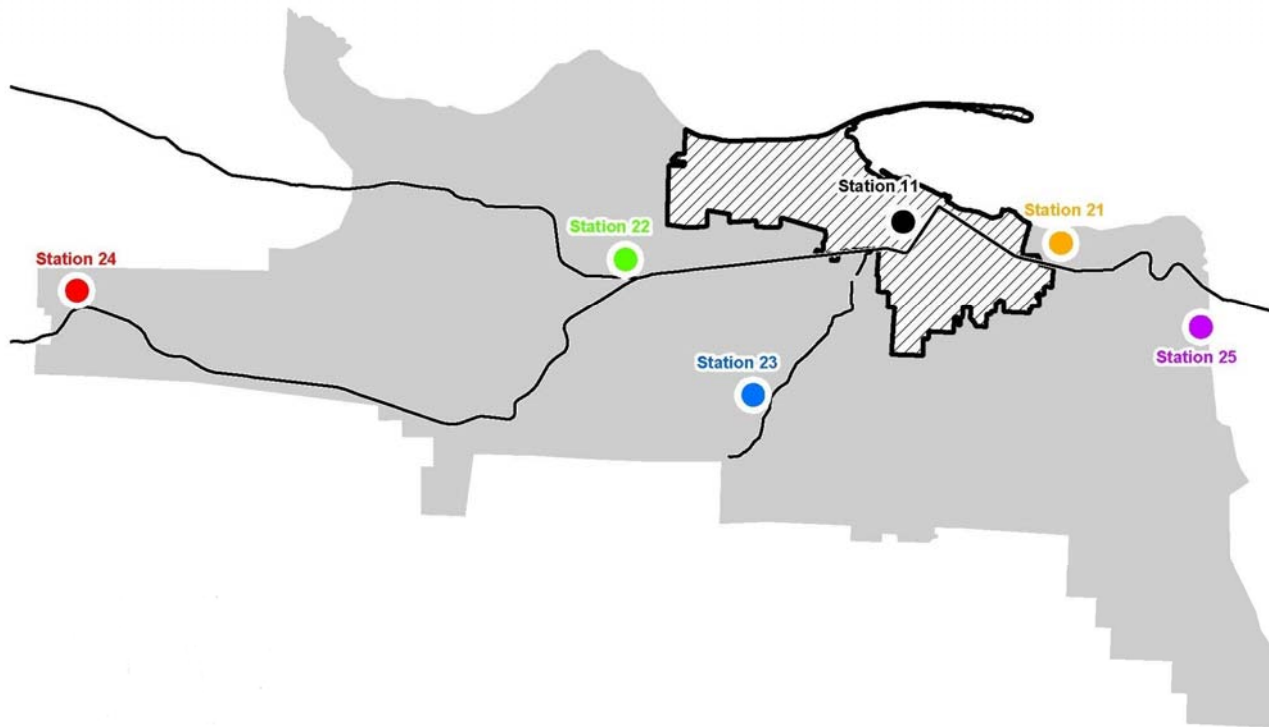


# Area Description

- CCFD #2 surrounds the City on three sides
  - To the east, west and south
  - Port Angeles fire station is located in the geographic center of the City and CCFD #2
- “Islands” within both jurisdictions
  - Harborcrest area & off of Wabash
- Difficult to tell where the District ends and the City begins



# Area Description





## Area Description – City

- The City contains the majority of:
  - Commercial occupancies
  - Licensed care facilities
  - Multi-family units
  - High-density single family residential
- The City is the County seat and the host to the majority of social services for the area



## Area Description – CCFD #2

- The District has significant commercial development along Highway 101
  - Both east & west
- The District has the majority of developable commercial and residential land
- The District has unique challenges with regard to wildland/urban interface



## Area Comparison – 1998

---

	<b>PAFD</b>	<b>CCFD #2</b> (Approx.)
<b>Population Served</b>	18,540	16,000
<b>Square Miles</b>	10.2	85
<b>Call Volume</b>	2,576	750
<b>Assessed Valuation</b>	\$984,937,116	\$482,068,837

---



## Area Comparison – Current

---

	<b>PAFD</b>	<b>CCFD #2</b>
<b>Population Served</b>	19,010	17,000
<b>Square Miles</b>	10.7	85
<b>Call Volume (2007)</b>	3,720	1,021
<b>Assessed Valuation</b>	\$1,952,176,500	\$1,122,251,405

---



# Developable Land

- PAFD
  - Currently, the land area of the City is 6861 acres
  - Of the 6861 acres, 462 is developable
    - 6.7% of the City's land area is developable
    - This include all occupancies
- CCFD #2
  - Currently, there are approx. 4,000 existing residential occupancies in CCFD #2
  - Utilizing existing zoning, between 11,000 and 12,000 additional residential occupancies could be built
    - Does not take into account a reduction for critical areas



## Governance – City

- A seven member council, elected at large by the citizens, governs all City departments
  - Four-year terms
- A fire chief reports to a city manager, who is appointed by the council
  - The chief is the administrative and operational director of the fire department



## Governance – CCFD #2

- CCFD #2 is a special district organized under Title 52 RCW
  - A three member board of commissioners, elected at large by the citizens, governs it
    - Six-year terms
- A fire chief reports to the commissioners
  - Administrative and operational director



## Operations – PAFD

- PAFD responds from a single centrally located station
- Shift staffing consists of 6 career firefighters
  - 1 captain, 1 lieutenant, 3 paramedics, and 1 firefighter
  - Minimum staffing of 4
  - Supplemented by off-duty career and by volunteers
    - Respond by pager-alert
- Chief officers respond to large-scale events requiring coordination

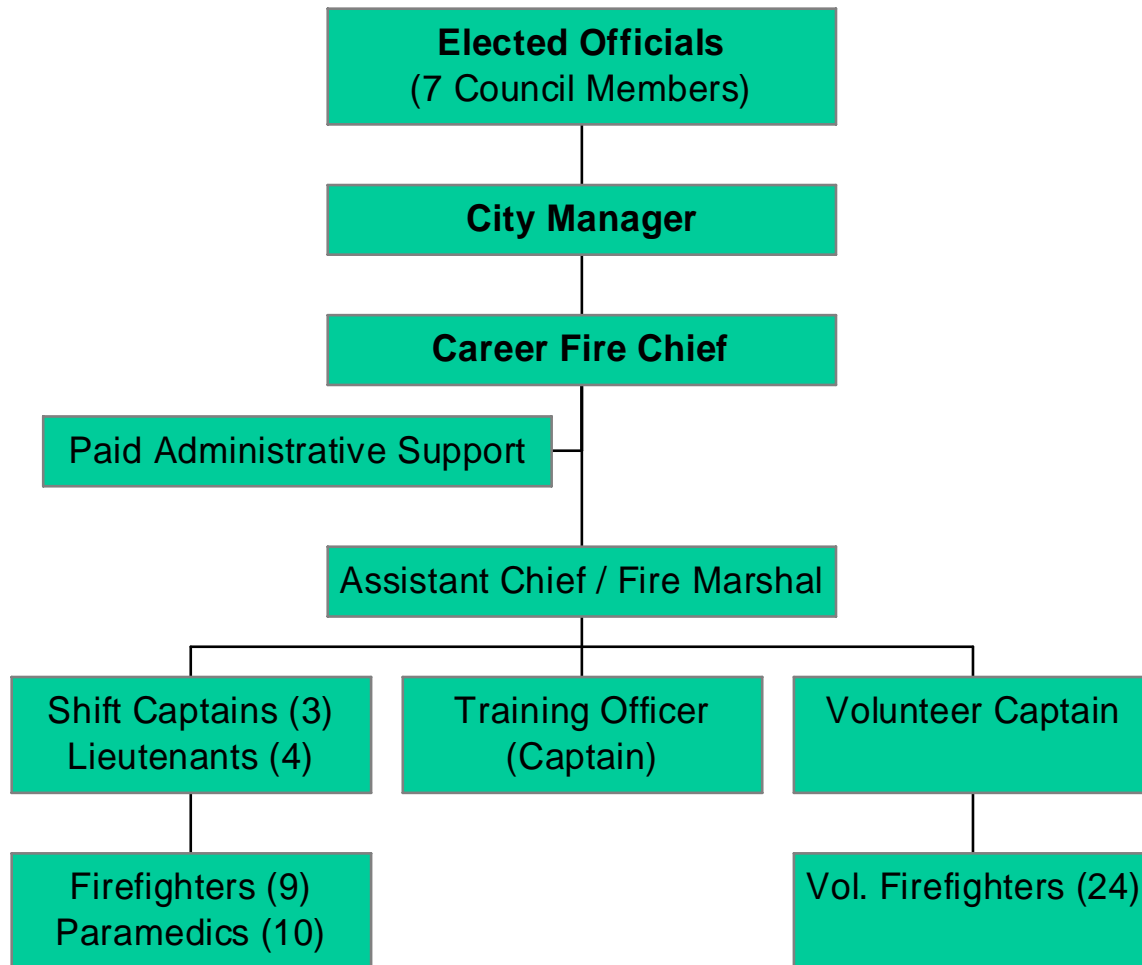


# Operations – PAFD

- PAFD provides paramedic response for medical aid
  - If advanced medical interventions are needed, PAFD provides treatment and transport
  - If only basic medical treatment is required, Olympic Ambulance is called to transport
- 2 or more paramedics are on duty 95% of the time
  - Utilized during significant medical emergencies and during simultaneous calls



# Organizational Chart – PAFD





## Operations – CCFD #2

- CCFD #2 responds from 5 stations
  - Administrative offices shared with PAFD
- Staffing is accomplished utilizing volunteer personnel who respond by pager-alert
- Chief officers routinely respond when additional staff is needed

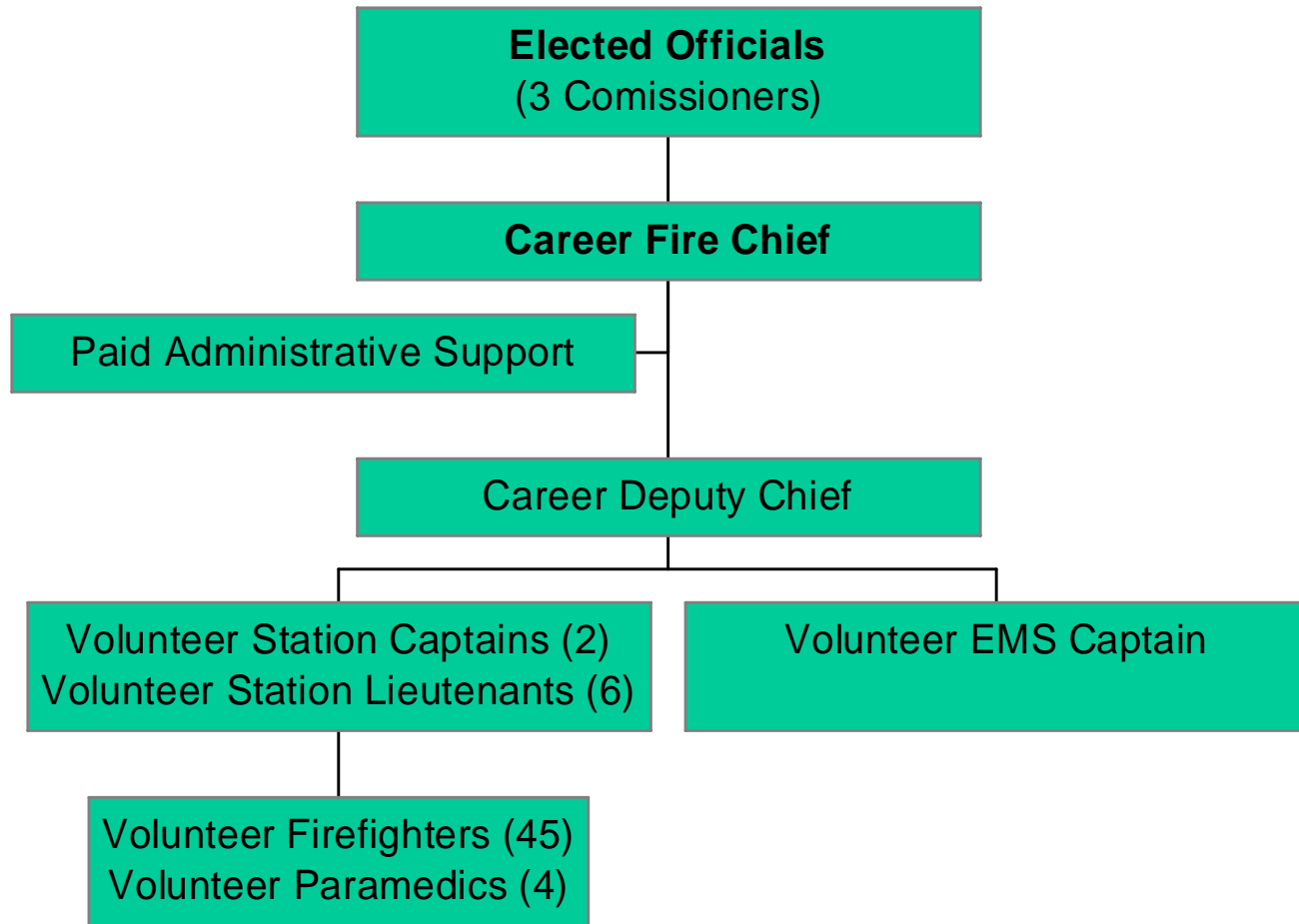


## Operations – CCFD #2

- Olympic Ambulance provides the District's primary response for medical aid
  - Routinely unavailable as Olympic Ambulance provides services outside CCFD #2
    - Interfacility transports in the area and non-emergency transports in the City
- When needed, CCFD #2 uses its volunteer paramedics
  - No guarantee a volunteer paramedic is available



# Organizational Chart – CCFD #2





# Service Levels – Information

## Fire Insurance Rating

Washington State Survey & Rating Bureau (WSRB) sets fire insurance ratings

- Evaluates staffing, apparatus, training, code enforcement and communications capability
- Ratings can rank from 1 to 10 (1 is the best)
  - For residential coverage, ratings between 1 and 5 are generally grouped together – for each class greater, there is generally a 7.5% increase in rates
  - For commercial, all ten classes are generally considered, with each raise in classification adding about a 7.5% increase to the fire insurance premium



# Service Levels – PAFD

## Fire Insurance Rating

- PAFD last rated in 2001, with informal review in 2007
  - In 2001, City maintained a class 4 rating
  - In 2007, in terms of deficiency points, closer to a class 3 rating



# Service Levels – CCFD #2

## Fire Insurance Rating

- CCFD #2 last rated in 1982
  - The District's rating was set at a class 7
    - In terms of deficiency points, close to a class 6 rating
  - At that time, the District served approximately 5,000 persons



# Service Levels – Information

## Response Times

- Response times are a significant factor in determining a department's effectiveness
  - Fire
    - National Standards recommend from time of call to arrival of first engine 6 mins. or less (10 mins. for adequate # of firefighters)
    - Confine fire to room of origin
  - EMS
    - National Standards recommend 4 mins. or less as the emergency medical response time goal
    - Prevent brain death



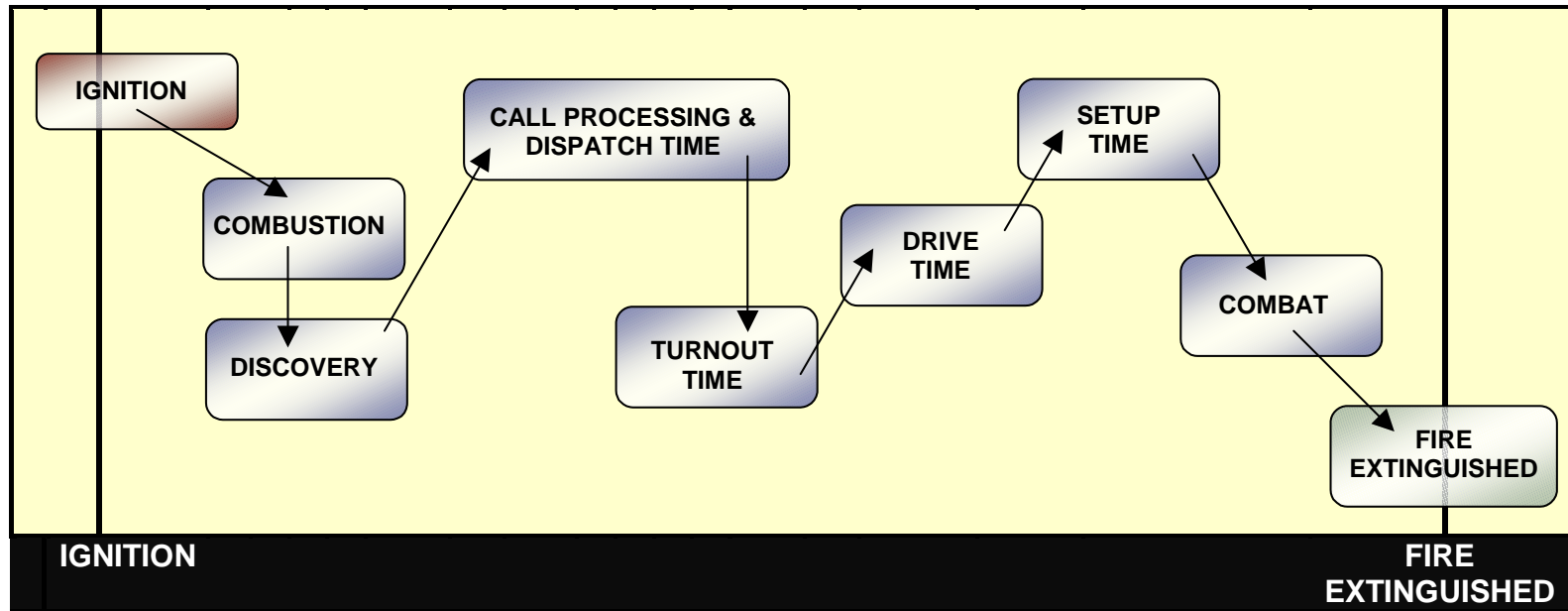
# Service Levels – Information

## Response Times

- Major response time components
  - Turnout time - the most significant difference in a staffed engine and non-staffed engine
  - Drive time - related to distance, traffic and road conditions
    - Station locations are determined by optimum drive time
      - WSRB requires that there should be a station:
        - » Within 3 miles of all calls
        - » 1.5 miles of high value commercial areas
        - » In rural areas, within 5 miles to receive credit



# Response Time Components





# Service Levels – PAFD

## First-Out Response Times

- PAFD's first-out engine and medic unit are staffed 24/7
  - Fire response time 5.5 minutes
  - EMS response time 6.5 minutes
- Non-staffed units have significantly greater response times
- Response times for simultaneous calls are decreased by assigning a paramedic on the engine



# Service Levels – CCFD #2

## First-Out Response Times

- CCFD #2 experiences fire response times typical of an all volunteer department
  - Turnout times are greater for non-staffed engines
  - Eastside response time 10.7 minutes
  - Westside response time 13.4 minutes
- EMS response times are for BLS equipped squads that provide basic medical interventions
  - Eastside response time 9.1 minutes
  - Westside response time 9.9 minutes



# Service Levels – Information

## Staffing

- L & I prohibits interior firefighting unless there are 2 firefighters to go inside and 2 firefighters are available outside
- National standards identify the need for a min. of 14 firefighters for a room and contents fire
- State statute requires each ALS ambulance be staffed with at least 1 paramedic and 1 EMT
- National standards recommend at least 2 EMTs and 2 paramedics on calls requiring advanced interventions



# Service Levels – PAFD

## Staffing

- Fire – PAFD responds immediately with a minimum of 4 firefighters
  - If medic unit is unavailable, could be reduced to 2 firefighters
  - Off-duty and volunteer personnel are immediately alerted by pager and respond if available
- EMS – Attempt to provide a minimum staffing of 2 paramedics on duty
  - Split to provide two levels of service
  - When advanced interventions are needed, engine responds with medic unit
    - Routinely providing 2 ALS and 2 BLS personnel



# Service Levels – CCFD #2

## Staffing

- Fire – In the District, volunteers are immediately alerted by pager and respond if available
- EMS – Private ambulance is utilized for primary response, if available
  - Private ambulance routinely provides service outside of District
  - Volunteer personnel are immediately alerted by pager and respond if available
    - A volunteer paramedic may respond if available to provide an additional medic



# Fire Prevention – PAFD

- All commercial and multi-family occupancies inspected approx. every 12 to 14 months
  - Accomplished by shift firefighters
- Fire Marshal conducts plan reviews on:
  - All new development and construction
  - New fire sprinkler & fire alarm systems
- Engine companies conduct pre-fire planning inspections of all major structures
- Participate in numerous public education activities annually



## Fire Prevention – CCFD #2

- Limited commercial inspections conducted with County Fire Marshal
- When forwarded by County, new development and construction is reviewed
  - PAFD routinely assists with reviews
- Commercial burn permit inspections are conducted
- Participate in numerous public education activities annually



# Facilities & Apparatus

	<b>PAFD</b>	<b>CCFD #2</b>
<b>Stations</b>	1	5
<b>Engines</b>	2	7
<b>Aerial Apparatus</b>	1	0
<b>Ambulances</b>	3	2
<b>Tenders</b>	0	2
<b>Wildland Apparatus</b>	0	2
<b>Specialty Apparatus</b>	2	2



# Budget Information

---

	<b>PAFD</b>	<b>CCFD #2</b>
<b>Fire Budget</b>	\$2,220,992	\$716,521
<b>EMS Budget</b>	\$1,331,721	\$108,600

---

*Utility – Self Supported*



## Funding – PAFD

- PAFD receives the majority of its funding through the City’s General Fund
  - A compilation of property tax, sales tax and utility tax
    - Funds the Department’s suppression budget
- Medic 1 is structured as a utility
  - The utility is fully funded
    - Funded by transport charges, monthly fee and a subsidy from the Department’s suppression budget
      - The monthly fee is based upon a combination of availability and demand



## Funding – CCFD #2

- CCFD #2 receives the majority of its funding through property taxes
  - Authorized to collect up to \$1.50 per \$1,000 of assessed valuation
    - Limited to 1% increase annually
    - District's current fire levy rate is \$0.59 per \$1,000
  - Authorized to collect up to \$0.50 per \$1,000 of assessed valuation for emergency medical services
    - The District has been unsuccessful in passing an EMS levy
      - Attempted in 2003 and approx. 1996



# Funding

## Peninsula Daily News – May 21, 2008



### Possible human remains found in yard

Investigators await test results, may link to 1987 missing person

By PAIGE DICKERSON  
PENINSULA DAILY NEWS

PORT ANGELES — Clallam County sheriff's investigators are awaiting results from the state crime lab on whether human remains were uncovered in west Port Angeles last week.

Those results could possibly solve the mystery surrounding a man who

has been missing for more than 20 years.

The Washington State Patrol Crime Lab has completed testing on what appeared to be a decomposed human body unearthed by a man working in his yard last week — but the findings won't be reported to the Clallam County Sheriff's Department for about two weeks.

The remains were discovered on the west side of Port Angeles when a man, who was not identified by the Clallam County Sheriff's Department, was leveling an area of his yard with a small tractor May 14.

"I believe he was making a play area for his children, and he found the remains and called us," Under-sheriff Ron Peregrine said.

#### Lab team called in

The Sheriff's Department went to investigate, then requested help from the State Patrol lab in Seattle.

A crime lab response team removed the remains, and the lab began testing them to determine what exactly they are — and possibly the identity of the person, if they are human, Peregrine said.

"The suspected human remains were decomposed from being buried and could not be identified," Sheriff's Detective Sgt. Lyman Moores said in a news release.

The results of the tests won't be back for a couple of weeks.

"We at the Sheriff's Department aren't experts on this, so we are

waiting for the test results," Peregrine said.

The location was the same Best Road property on which the Sheriff Department dug in April 2007 in the search for a man who has been missing since 1987.

No body was found at that time. "We suspect it could be in connection to a person who was previously listed as missing," Peregrine said.

"But we aren't going to speculate even though there is a small infence there.

TURN TO REMAINS/A

### School levy headed for defeat

Voters reject PA district's bid for technology boost

By PAIGE DICKERSON  
PENINSULA DAILY NEWS

PORT ANGELES — A proposed Port Angeles School District tax levy to purchase new computers and bolster technology curriculum was headed toward defeat Tuesday night.

With 7,482 ballots received and tallied in the all-mail election, there were 4,106, or 54.94 percent, in





# Funding

Peninsula Daily News – May 22, 2008

## School bond fails by razor's edge — 0.04%

Remaining ballots unlikely to avert defeat

BY ERIK HIDDLE  
PENINSULA DAILY NEWS

postmarked too late."

Tuesday was the postmark deadline for the all-mail election.

The general mood of bond campaigners was shared across the board.

"We're pretty frustrated," said J Piper, a member of the

Meanwhile, OMC has unoccupied space for rent at its Ancillary Services Building in the Sequim Medical Park.

## Jefferson two pov

Study looks at PUD providing bulk of wattage

BY JEFF CHEW  
PENINSULA DAILY NEWS



# Funding

- Funding should be diversified – not relying on taxes alone
- Funding needs to be:
  - Adequate
  - Sustainable
  - Accepted
    - Fair

*Think Outside the Box*



# Questions ?